

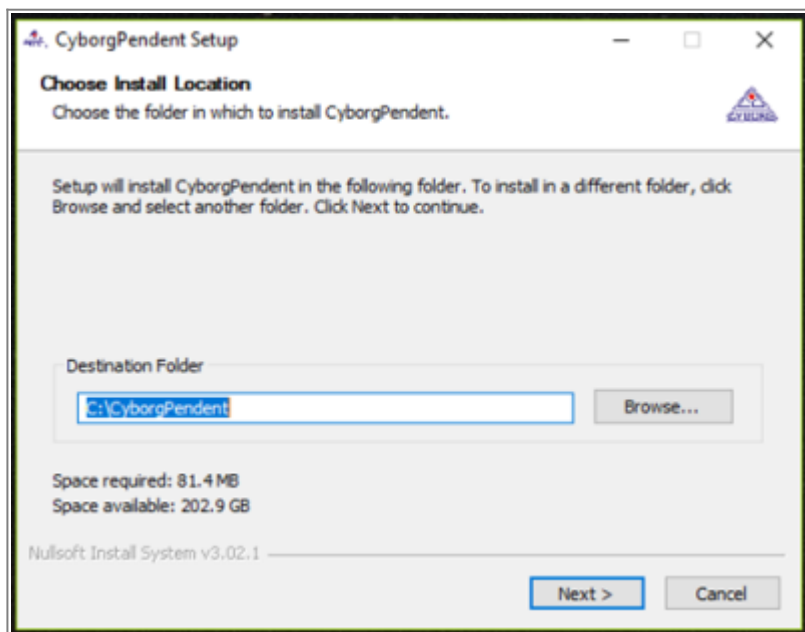
# Installing the Cyborg Pendent Software on a standalone pc with a fixed IP-address.

Note: If you are not familiar with setting up Ethernet connections, you should get help from a qualified IT-specialist.

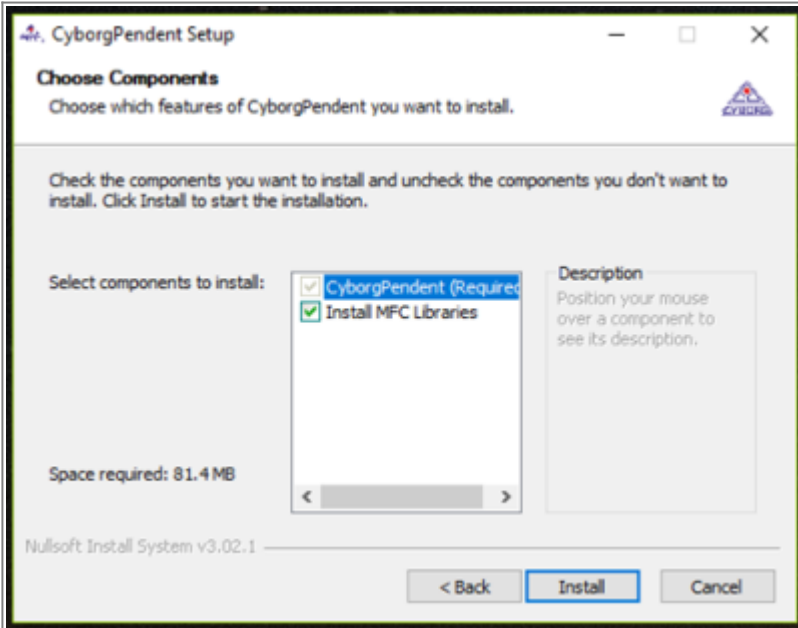
## Preparations

1. Connect the Cyborg X-300 with the pc by means of the supplied Ethernet cable, or another CAT 6A ethernet cable.
2. Put the power cable in the machine's power socket and then in the wall outlet.
3. Switch on the Cyborg X-300's main switch.
4. Boot your computer as administrator with full administrator rights.
5. Make sure all firewalls and virus scanners are disabled.
6. Give your pc the following fixed IP-address: 172.22.2.101. Our Cyborg machine is preprogrammed with the following fixed IP-address: 172.22.2.100 and the following netmask: 255.255.255.0.
7. Put the usb stick which was supplied with the Cyborg X-300 in the pc.
8. Create a folder on your C-drive, and name it "Cyborg".
9. Copy the file "CyborgPendent-0.0.xx\_x64.exe" file in the "Cyborg" folder.

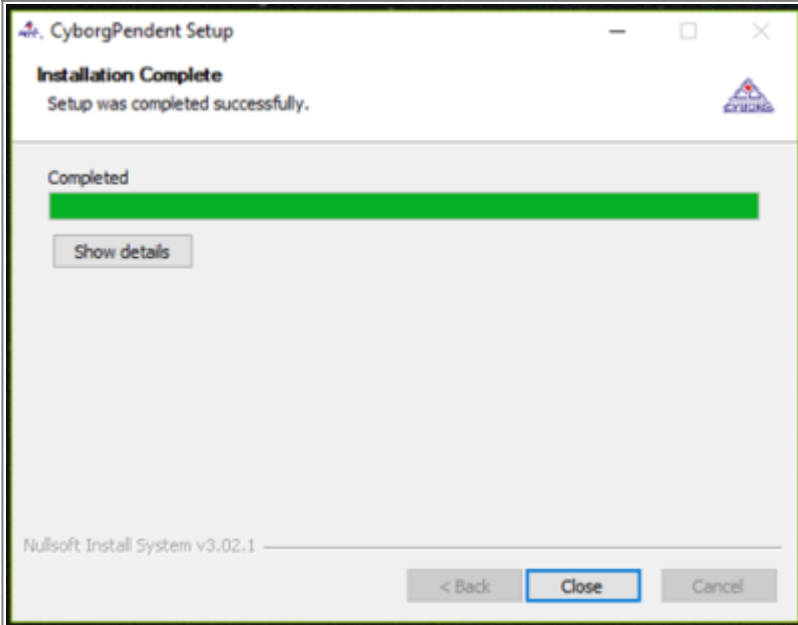
## Installation



- Doubleclick on the "CyborgPendent-0.0.xx\_x64.exe" file to start the installation procedure. When you run this file for the first time you will see a window similar to this one:  
- Click the "Next" button.- After a few seconds you will see the following window on your pc screen:



- Click the “install” button, the software installs itself and at the end of the installation procedure you will see the following window:



- Then click the “Close” button. Your Cyborg machine software is now fully installed.

**Continue to [registering the virtual pendent software](#).**  
**Continue to [the table of contents](#).**

From: <https://manuals.cyborg-engravers.com/> - **cyborg-engravers**

Permanent link: [https://manuals.cyborg-engravers.com/doku.php?id=en:x300:pendent\\_installation\\_standalone](https://manuals.cyborg-engravers.com/doku.php?id=en:x300:pendent_installation_standalone)

Last update: **2023/05/17 10:05**

