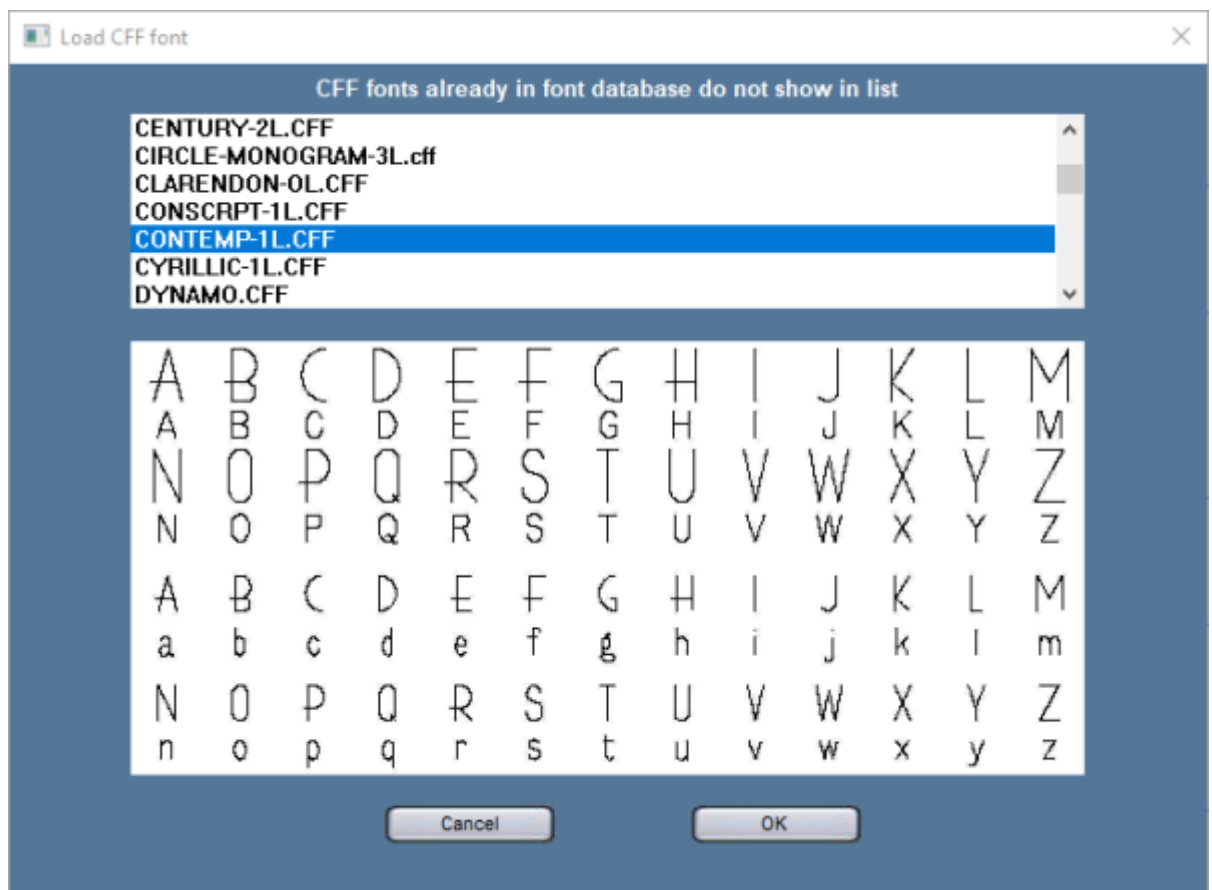


# "Import Cipher Font (\*.CFF)" menu option

Standard, as can be seen in the **Font style** drop down menu in the main screen, only a limited selection of the most widely used fonts is available. If you want to use any of the other Cipher fonts that are available in Symmetry, you have to import these fonts. Should you wish to have more or other font styles standard available in Symmetry? you can change the list of available fonts through the **Preferences** menu.

At this time, 45 Cipher fonts are available in Symmetry, most of them being standard European fonts. Additionally, there are also a Russian (Cyrillic) and Greek font available.

## Details



- Access the **Import Cipher Font** through the **Text** menu.
- Select the font style of your choice.
- The top half of the **Load CFF font** window shows a list of available fonts with a scrollbar on the side.  
The bottom half of the window is a preview of the selected font.
- When clicking the **OK** button at the bottom of the window, the selected font will be added to the **Font style** list at the bottom center of the main screen, and will automatically be applied to the current text line.

## List of fonts

Font name	Filename	Available as standard	European accents available	Notes
<b>Avalon</b>	<a href="#">AVALON-1L.CFF</a>	No	<b>Yes</b>	single-line
<b>Baskerville Bd</b>	<a href="#">BASKERVILLE-OL.CFF</a>	No	No	outline
<b>Trophy Block</b>	<a href="#">BLOCK-2L.CFF</a>	No	No	small caps font
<b>BowlBall</b>	<a href="#">BOWLBALL-3L.CFF</a>	No	<b>Yes</b>	small caps font
<b>Braille</b>	<a href="#">BRAILLE1.CFF</a>	No	No	
<b>Braille2</b>	<a href="#">BRAILLE2.CFF</a>	No	No	
<b>Century</b>	<a href="#">CENTURY-2L.CFF</a>	No	No	
<b>CirMono</b>	<a href="#">CIRCLE-MONOGRAM-3L.CFF</a>	No	No	
<b>Clarendon</b>	<a href="#">CLARENDON-OL.CFF</a>	No	No	outline
<b>Com Script</b>	<a href="#">COMSCRIPT-9L.CFF</a>	<b>Yes</b>	<b>Yes</b>	
<b>Connect Script</b>	<a href="#">CONSCRIPT-1L.CFF</a>	No	No	single-line
<b>Contemp 1 Line</b>	<a href="#">CONTEMP-1L.CFF</a>	No	No	single-line
<b>Russion CY</b>	<a href="#">CYRILLIC-1L.CFF</a>	No	N/A	single-line
<b>DIN1451</b>	<a href="#">DIN1451-1L.CFF</a>	<b>Yes</b>	<b>Yes</b>	single-line
<b>Dynamo</b>	<a href="#">DYNAMO.CFF</a>	No	No	
<b>Flora Bold</b>	<a href="#">FLORA-BOLD-5L.CFF</a>	No	No	
<b>Flora Normal</b>	<a href="#">FLORA-NORMAL-3L.CFF</a>	<b>Yes</b>	<b>Yes</b>	
<b>Fritz Med</b>	<a href="#">FRITZMEDIUM-3L.CFF</a>	No	No	
<b>Fritz Quad</b>	<a href="#">FRITZ-OL.CFF</a>	No	No	outline
<b>Futura 1L</b>	<a href="#">FUTURA-1L.CFF</a>	No	<b>Yes</b> <sup>1)</sup>	small caps font
<b>Gothic</b>	<a href="#">GOTHIC-1L.CFF</a>	No	No	
<b>Goudy Bold</b>	<a href="#">GOUDY-OL.CFF</a>	No	No	outline
<b>Greek 1L</b>	<a href="#">GREEK-1L.CFF</a>	No	N/A	
<b>Handel</b>	<a href="#">HANDEL-1L.CFF</a>	No	No	
<b>Helvetica 1 Line</b>	<a href="#">HELVET-1L.CFF</a>	<b>Yes</b>	No	single-line
<b>3 Line Helvetica</b>	<a href="#">HELVET3L.CFF</a>	<b>Yes</b>	<b>Yes</b>	
<b>6 Line Helvetica</b>	<a href="#">HELVET6L.CFF</a>	<b>Yes</b>	<b>Yes</b>	
<b>Microstyle Bd</b>	<a href="#">MICRO.CFF</a>	No	No	
<b>Old English 3L</b>	<a href="#">OLDENGLISH-3L.CFF</a>	No	No	
<b>Optima 5L</b>	<a href="#">OPTIMA-5L.CFF</a>	No	No	
<b>Upp/Low Roman</b>	<a href="#">ROMANUL-3L.CFF</a>	No	<b>Yes</b>	
<b>3 Line Roman</b>	<a href="#">ROMAN-UL-3L.CFF</a>	No	<b>Yes</b>	small caps
<b>Con.Script</b>	<a href="#">SCRIPT-1L.CFF</a>	No	No	single-line
<b>2 line script</b>	<a href="#">SCRIPT-2L.CFF</a>	No	<b>Yes</b>	
<b>Souvenir O/L</b>	<a href="#">SOUVENIR-OL.CFF</a>	No	No	outline
<b>Stencil Gothic</b>	<a href="#">STENCIL-GOTHIC-1L.CFF</a>	No	No	Does not contain lowercase characters.

Font name	Filename	Available as standard	European accents available	Notes
<b>Stencil</b>	<a href="#">STENCIL-OL.CFF</a>	No	No	<ul style="list-style-type: none"> <li>• outline</li> <li>• Does not contain lowercase characters.</li> </ul>
<b>Stymie 1L</b>	<a href="#">STYMIE-1L.CFF</a>	No	<b>Yes</b>	single-line
<b>Triumvirate Blk</b>	<a href="#">TBKOUT-OL.CFF</a>	No	No	outline
<b>Times 3 Line</b>	<a href="#">TIMES-3L.CFF</a>	No	No	
<b>Outline Times</b>	<a href="#">TIMES-OL.CFF</a>	No	No	outline
<b>Triumvirate Out</b>	<a href="#">TRIUMVIRATE.CFF</a>	No	No	
<b>Univers 39</b>	<a href="#">UNIVERS39-2L.CFF</a>	<b>Yes</b>	<b>Yes</b>	
<b>Univers 55</b>	<a href="#">UNIVERS55-6L.CFF</a>	No	<b>Yes</b>	
<b>Victoria</b>	<a href="#">VICTORIA-2L.CFF</a>	No	<b>Yes</b>	

## Notes

### Cipher vs. TrueType fonts

- When choosing the **Text** menu, you will notice that the top two menu options allow you to import fonts: either **Cipher fonts**, or **TrueType fonts**. Both font types are fundamentally different: **Cipher fonts** were designed specifically for engraving purposes and come only with Symmetry and its predecessor, Cipher, while **TrueType fonts** are fonts for layout and printing purposes and come with a wide array of layout and design softwares, such as MS Word, CoreIDRAW, Adobe Illustrator, etc.
- Among the available Cipher fonts, there are some outline fonts, single-line fonts, and multiple-line fonts. TrueType fonts will always start as outline fonts. If you want to engrave them, not as outline characters, but filled out, you need to apply the **Object Fill and Tool dimensions** menu option after typing in your text. As explained in the **Object Fill and Tool dimensions** in this manual, the outline of the text will consequently be filled using the "island fill" method. You should be aware that, in comparison with similar multiple-line fonts, filled out Trueype texts take much longer to engrave. You can slight influence this by choosing a wider cutter tip, but only to a limited degree.

1)

The font is small caps, but when typing lower case characters with accents, they are "real" lowercases, not small caps.

From:  
<https://manuals.cyborg-engravers.com/> - **cyborg-engravers**

Permanent link:  
[https://manuals.cyborg-engravers.com/doku.php?id=de:symmetry:option\\_import\\_cipher\\_font](https://manuals.cyborg-engravers.com/doku.php?id=de:symmetry:option_import_cipher_font)

Last update: **2023/06/16 09:42**

